

## HIV/AIDS Epidemiology in Alameda County: State of the County Report

---

Muntu Davis, MD, MPH  
County Health Officer and Public Health Director  
Alameda County

Jun 24, 2014

White House Office of National AIDS Policy:  
Regional Listening Session  
Oakland City Hall, Oakland, CA



## Our Mission

---

To work in partnership with the community  
to ensure the optimal health and well-being of all  
people  
through a dynamic and responsive process  
respecting the diversity of the community and  
challenging us to provide for present and future  
generations.



## Our Vision



Everyone in Alameda County,  
no matter who you are,  
how much money you make,  
where you live or  
the color of their skin,  
has the same opportunities  
for a healthy, fulfilling and  
productive life.



Jun 24, 2014

3

White House Office of National AIDS Policy: Regional Listening Session  
Oakland City Hall, Oakland, CA

## In relationship to the HIV/AIDS epidemic...



*“People are healthy,  
live well and enjoy life.”*

Jun 24, 2014

4

White House Office of National AIDS Policy: Regional Listening Session  
Oakland City Hall, Oakland, CA

## Our Desired Population Results



- **Healthy Policies and Systems**

Support healthy places, healthy people and equitable opportunity

- **Healthy Places**

Protect and support health, safety and well-being

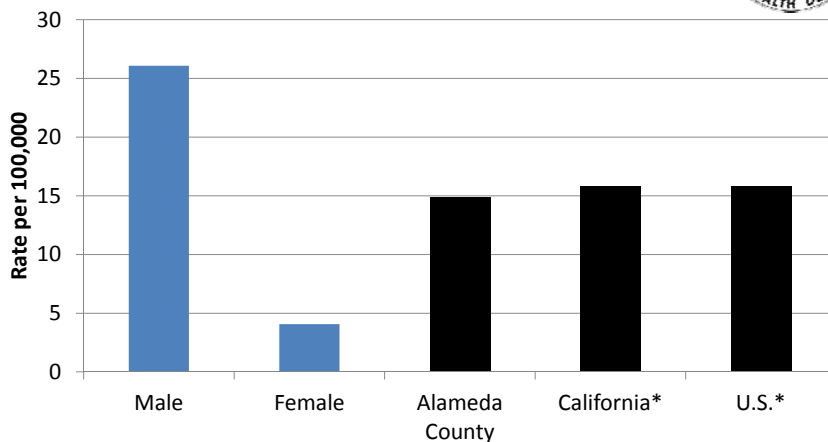
- **Healthy People**

Have the knowledge, habits, support and opportunity to be healthy and live well



5

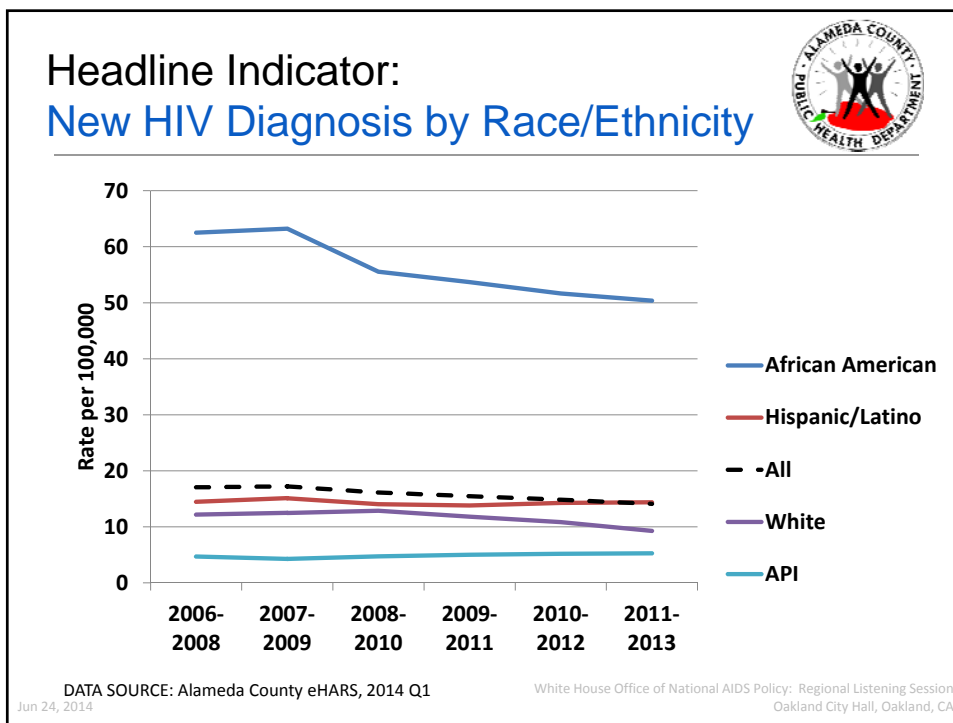
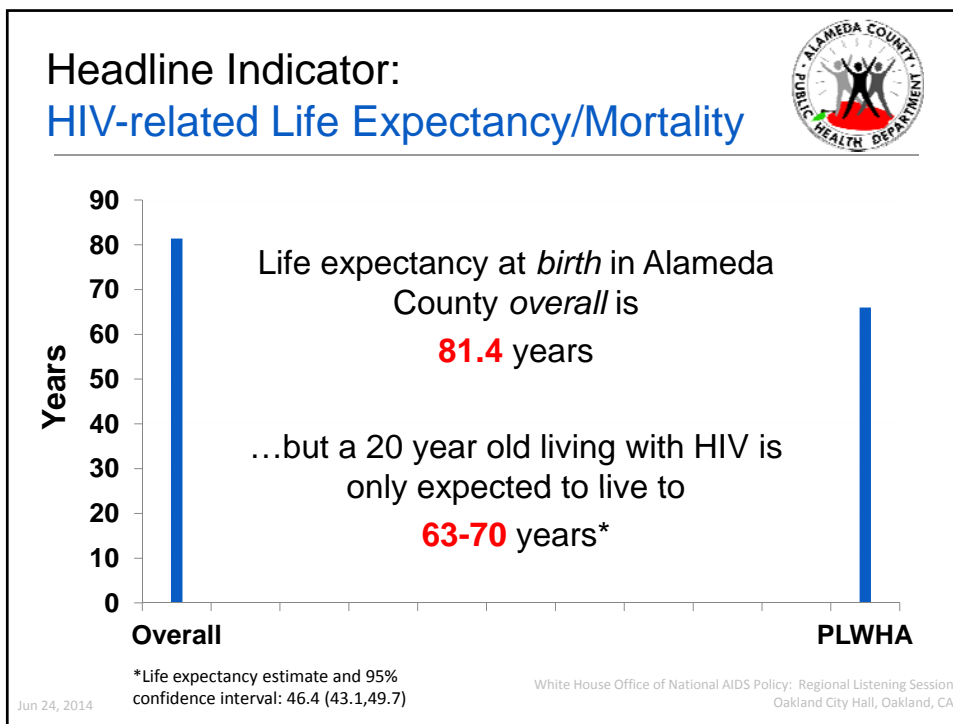
## HIV Diagnosis Rates by Sex, Alameda County, 2010-2012



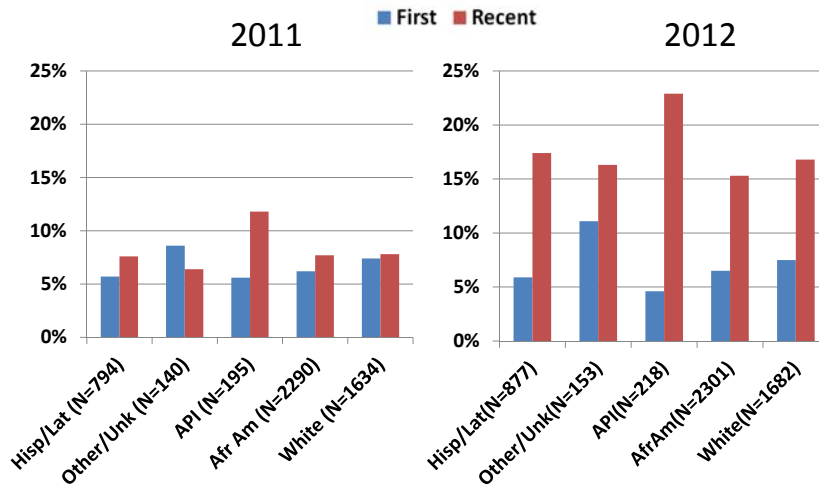
\*Rates are for 2011. Estimated numbers resulted from statistical adjustment that accounted for reporting delays, but not for incomplete reporting. SOURCE: CDC, "Rates of diagnoses of HIV infection among adults and adolescents, by area of residence, 2011—United States and 6 dependent areas."  
 DATA SOURCE: Alameda County eHARS, 2014 Q1

White House Office of National AIDS Policy: Regional Listening Session  
 Oakland City Hall, Oakland, CA

Jun 24, 2014

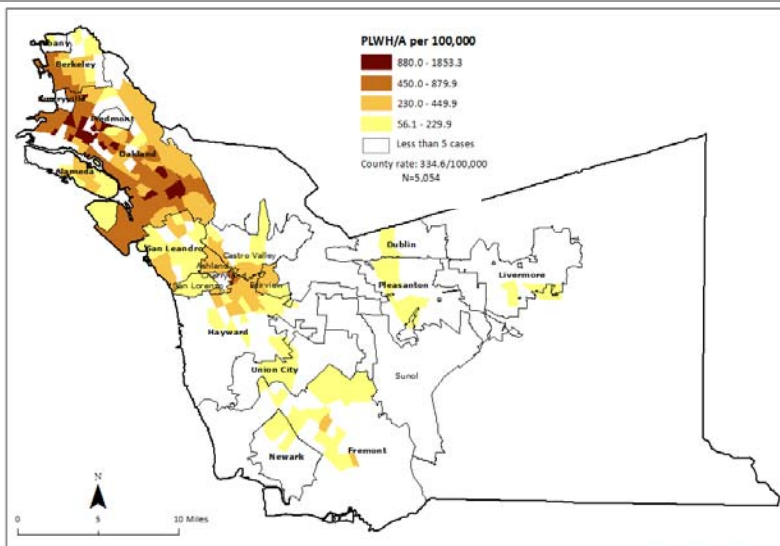


## Headline Indicator: HIV+ People with Undetectable Viral Loads

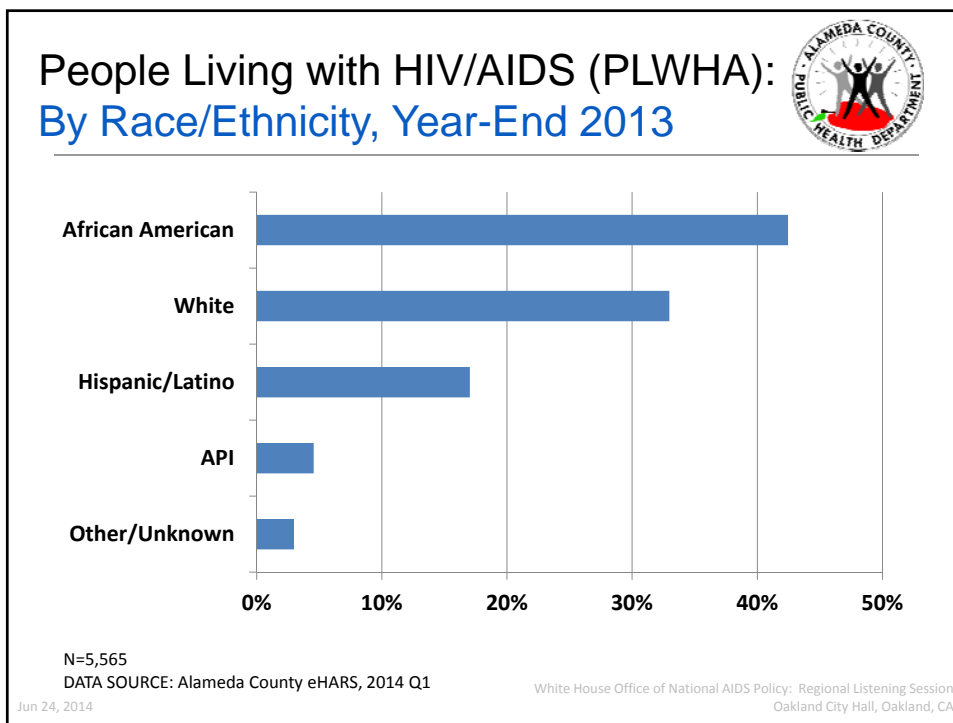
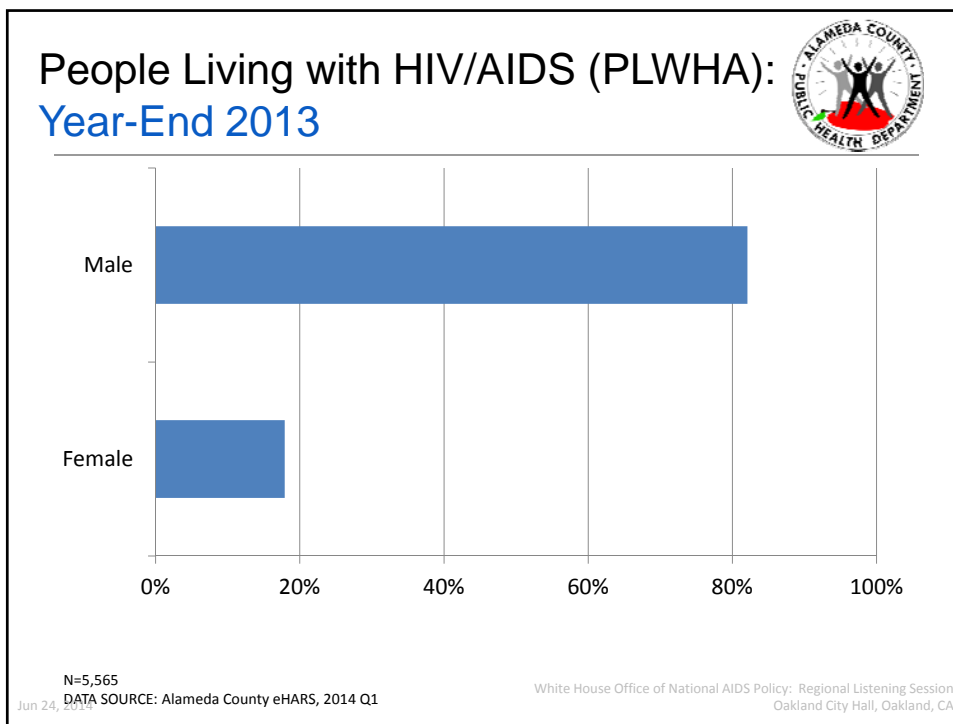


Jun 24, 2014 Source: Alameda County Enhanced HIV/AIDS Reporting System (eHARS) White House Office of National AIDS Policy: Regional Listening Session Oakland City Hall, Oakland, CA

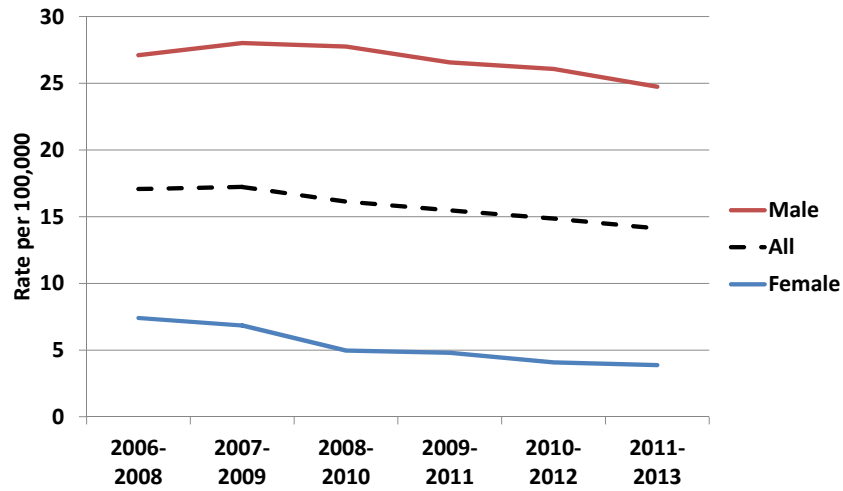
## People Living with HIV/AIDS (PLWHA): Year-End 2012



Source: CAPE, with data from eHARS 2012



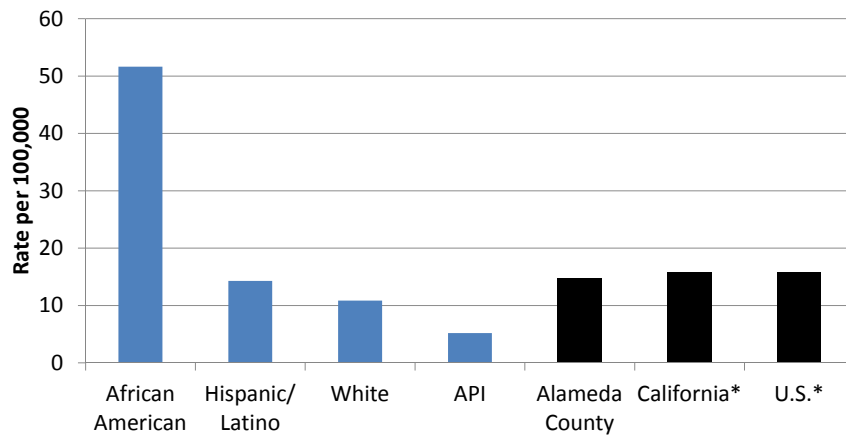
## County Trends in HIV Diagnosis: Rates by Sex



DATA SOURCE: Alameda County eHARS, 2014 Q1  
Jun 24, 2014

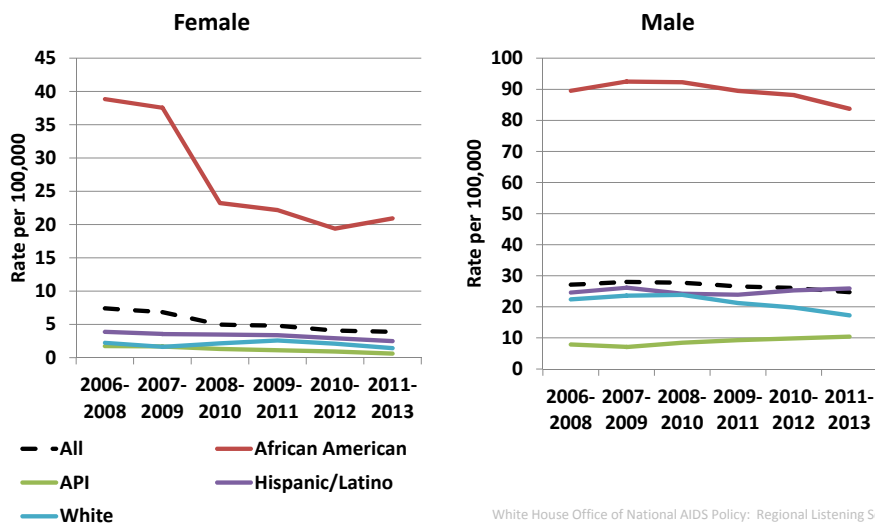
White House Office of National AIDS Policy: Regional Listening Session  
Oakland City Hall, Oakland, CA

## HIV Diagnosis Rates by Race/Ethnicity, Alameda County, 2010-2012

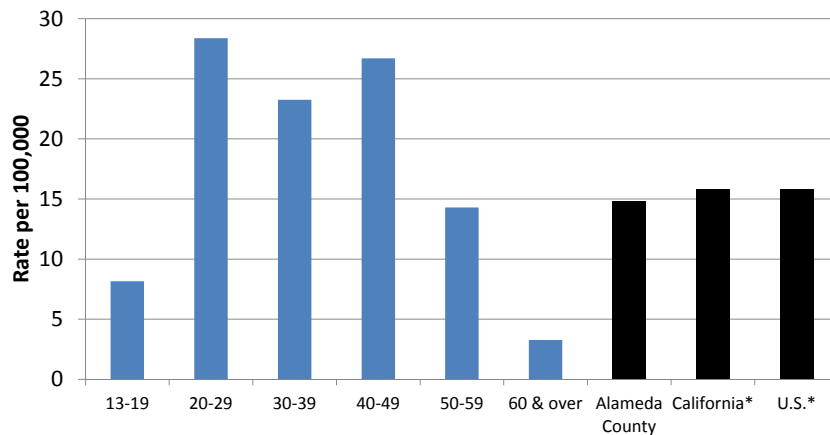


\*Rates are for 2011. Estimated numbers resulted from statistical adjustment that accounted for reporting delays, but not for incomplete reporting. SOURCE: CDC, "Rates of diagnoses of HIV infection among adults and adolescents, by area of residence, 2011—United States and 6 dependent areas."  
DATA SOURCE: Alameda County eHARS, 2014 Q1

## County Trends in HIV Diagnosis: Rates by Sex & Race/Ethnicity



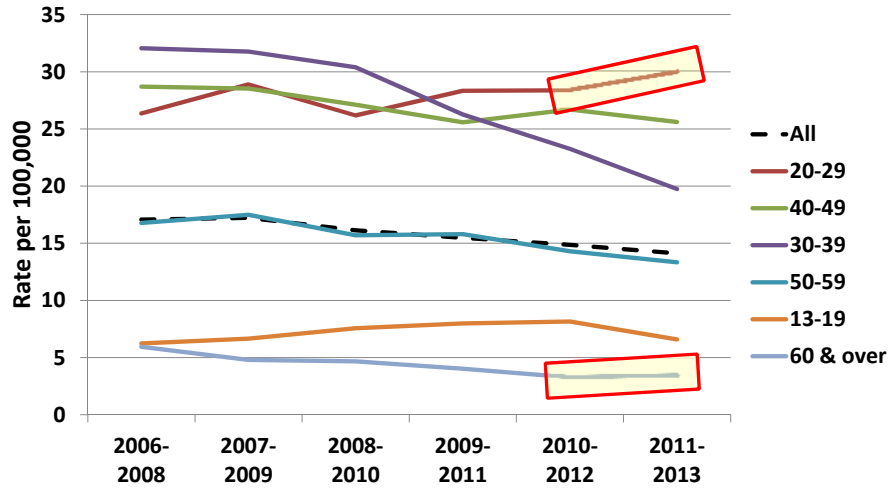
## HIV Diagnosis Rates by Age, Alameda County, 2010-2012



\*Rates are for 2011. Estimated numbers resulted from statistical adjustment that accounted for reporting delays, but not for incomplete reporting. SOURCE: CDC, "Rates of diagnoses of HIV infection among adults and adolescents, by area of residence, 2011—United States and 6 dependent areas."  
DATA SOURCE: Alameda County eHARS, 2014 Q1



## County Trends in HIV Diagnosis: Rates by Age



DATA SOURCE: Alameda County eHARS, 2014 Q1

Jun 24, 2014

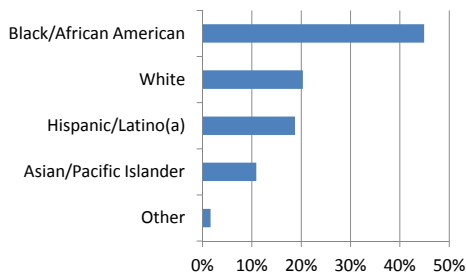
White House Office of National AIDS Policy: Regional Listening Session  
Oakland City Hall, Oakland, CA

## County-Funded HIV Testing: By Race and By Age, 2013

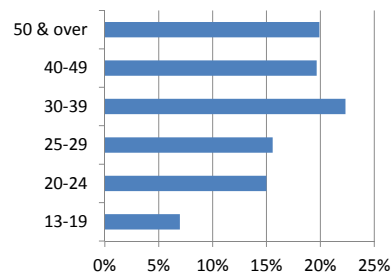


- 6,334 tests done
- 65.2% male, 2.4% transgender
- 77 positives total (30 preliminary) for 0.74% positivity

All Tests By Race/Ethnicity



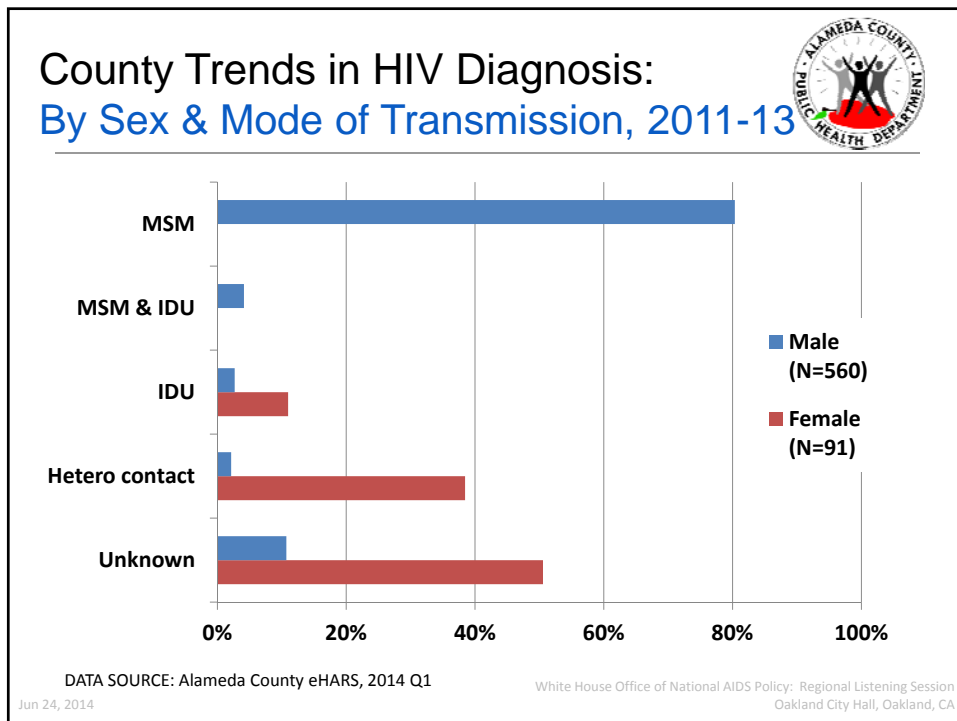
All Tests By Age



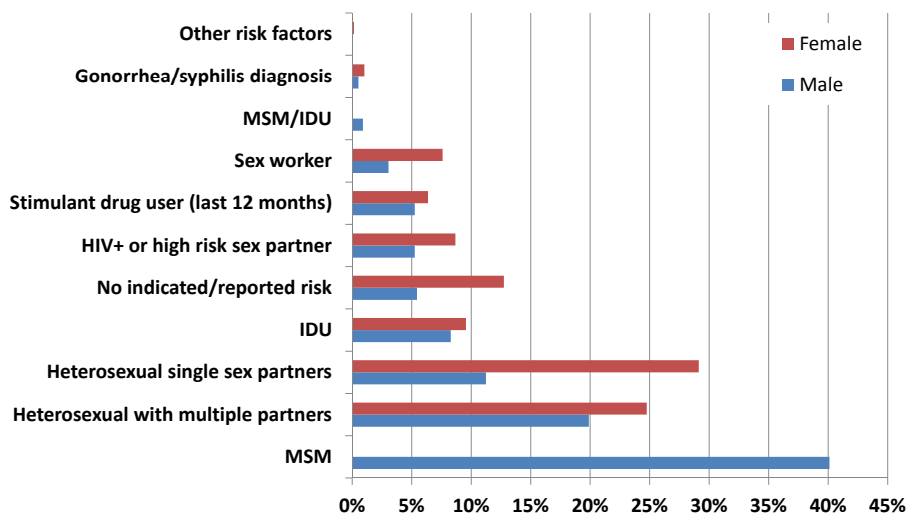
DATA SOURCE: LEO, CY2013

Jun 24, 2014

White House Office of National AIDS Policy: Regional Listening Session  
Oakland City Hall, Oakland, CA

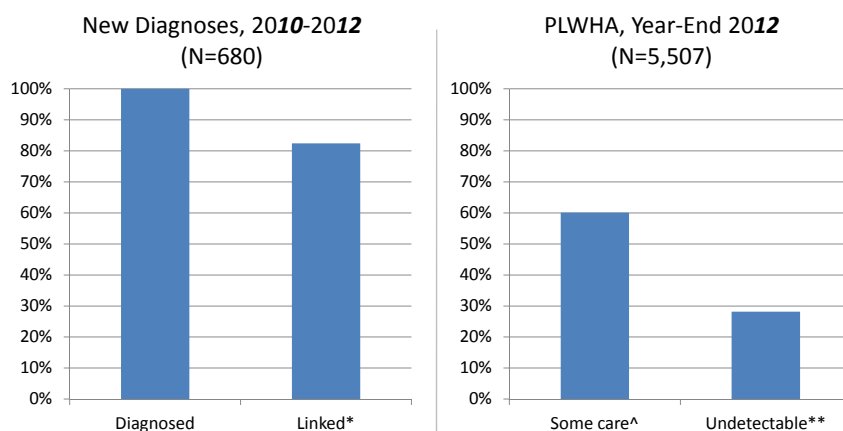


## County-Funded HIV Testing: By Gender and Patient Risk Factor, 2013



DATA SOURCE: LEO, CY2013

## HIV/AIDS Care: Diagnosis, Linkage & Evidence of Care



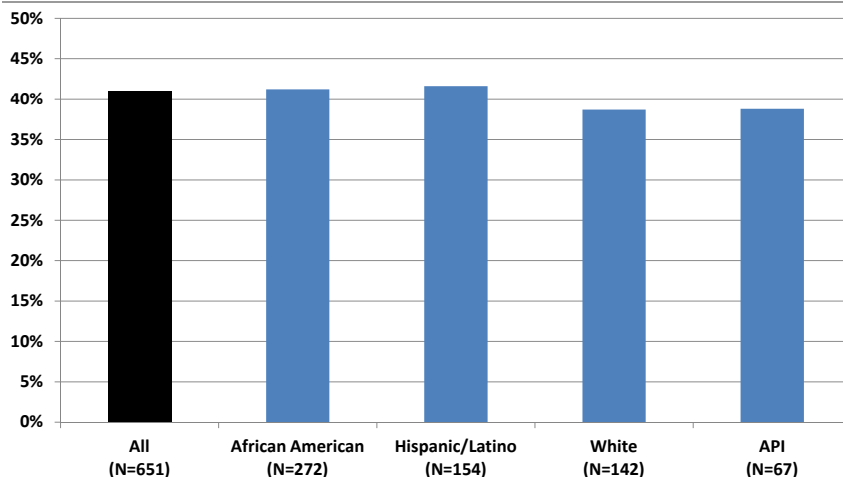
\*CD4 or VL done within 90 days of diagnosis

^ Some care defined as one or more laboratory tests done between March 30, 2012 – March 29, 2013

\*\* Most recent viral load <=75 (ordered between March 30, 2012 – March 29, 2013)

DATA SOURCE: Alameda County eHARS, 2014 Q1

## County Late Diagnosis\*: By Race/Ethnicity, 2011-13



\* AIDS at or within a year of initial HIV diagnosis. Proportions are of the racial/ethnic group specified. "Other/Unknown" race/ethnicity not shown (N=16).

Jun 24, 2014

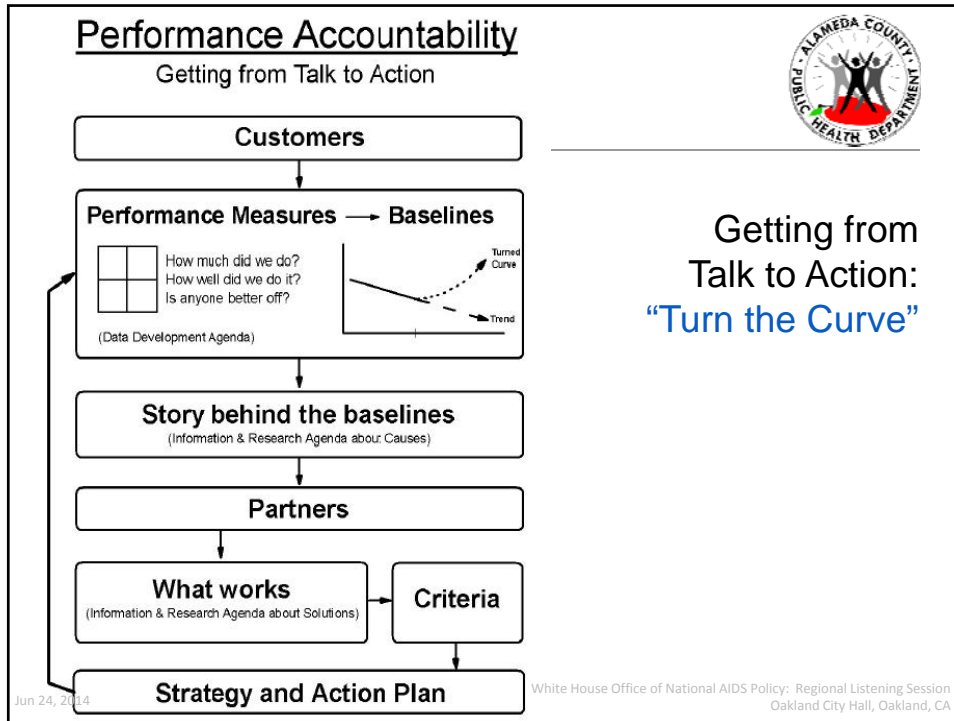
DATA SOURCE: Alameda County eHARS, 2014 Q1

Enjoy Life.  
Take control.  
**STOP** HIV/AIDS.

Special Thanks to...

HIV Epidemiology and Surveillance Unit  
HIV STD Section  
Division of Communicable Disease  
Control and Prevention  
Alameda County Public Health Department

Any questions? Thank you. | Muntu Davis, MD, MPH  
Email: [muntu.davis@acgov.org](mailto:muntu.davis@acgov.org)




## Measuring Impact (Effect): HIV Education Services

What We Do	How Well We Do It
# Trained, total # Trained, high-risk group # Forums/Workshops # Outreach	% report training as helpful % decide to be tested for HIV
Is Anyone Better Off?	
# # # #	% who know their status % with increased HIV knowledge (Pre & Post) % who know how to prevent HIV % reporting reduced risk behaviors

FP 51 rev 9/00

Jun 24, 2014 White House Office of National AIDS Policy: Regional Listening Session  
Oakland City Hall, Oakland, CA

## Measuring Impact (Effect): HIV Testing Services



<u>What We Do</u>	<u>How Well We Do It</u>
# Tested # IV Drug Users # MSM # Sex Workers # Partners of HIV+ People # HIV Tests	% tested who are in target population % tested who are HIV+
<u>Is Anyone Better Off?</u>	
#	% tested who know their HIV status (got results)
#	% testing HIV+ who were linked to care within 3 months
#	
#	


Jun 24, 2014

FP51 rev 8/00

Data Development  
 % testing HIV- who stay HIV-  
 % reporting risk reduction behavior  
 % HIV+ who notified partners of status  
 % reporting incr. knowledge of HIV transmission

Policy: Regional Listening Session  
 Oakland City Hall, Oakland, CA

## Measuring Impact (Effect): Linkage to Care Services



<u>What We Do</u>	<u>How Well We Do It</u>
# Served # by Race/Ethnicity # by Sex # by Sexual Orientation # by Age Group # by Substance Abuse # by Housing Status # in Foster Care	% followed up with % linked within 3 months % re-linked to care % linked to culturally competent provider
<u>Is Anyone Better Off?</u>	
#	
#	
#	
#	

Jun 24, 2014

FP51 rev 8/00

Data Development  
 % linked to care now with undetectable VL  
 % reporting reduced risk behaviors  
 % adhering to treatment

Policy: Regional Listening Session  
 Oakland City Hall, Oakland, CA